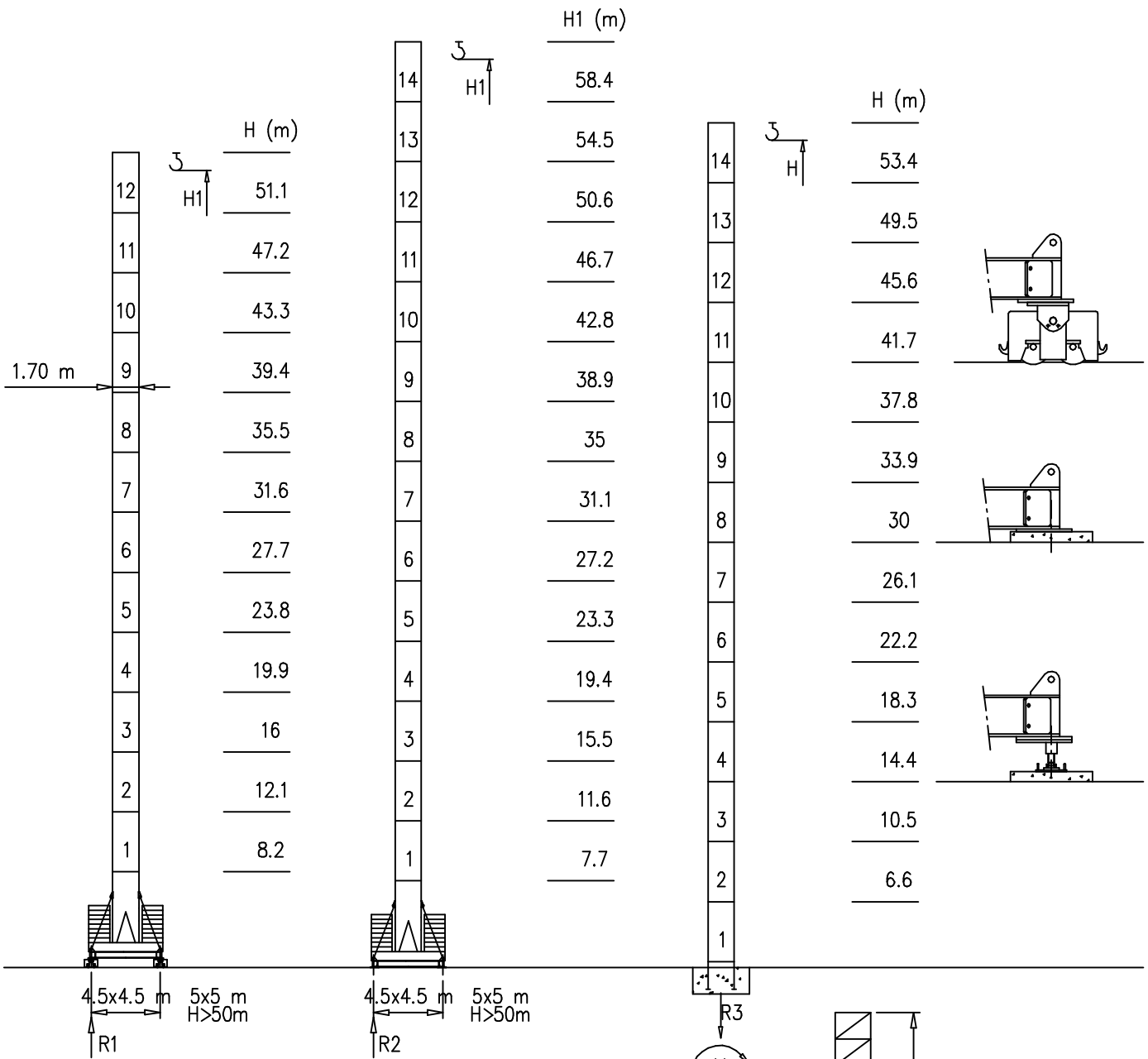


- S1700 – 1.70x1.70 m
- S2050 – 2.05x2.05 m

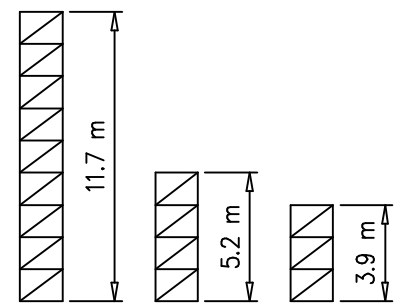
Torre/Reazioni – Masts/Reactions – Mat/Réactions – Maste/Eckdrücke – Måstil/Reacciones – Tramo/Reações

S1700

44 m → 58 m

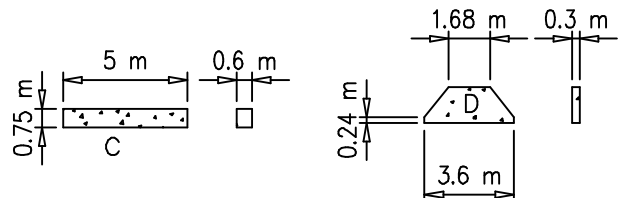


H=46–56 m		H=0–45 m	
R1	106 t	R1	89 t
R2	106 t	R2	88 t
R3	95 t	R3	74 t
M	336 tm	M	194 tm



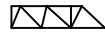
Peso zavorra – Ballast weight – Poids du lest – Ballastgewicht – Peso de lastre

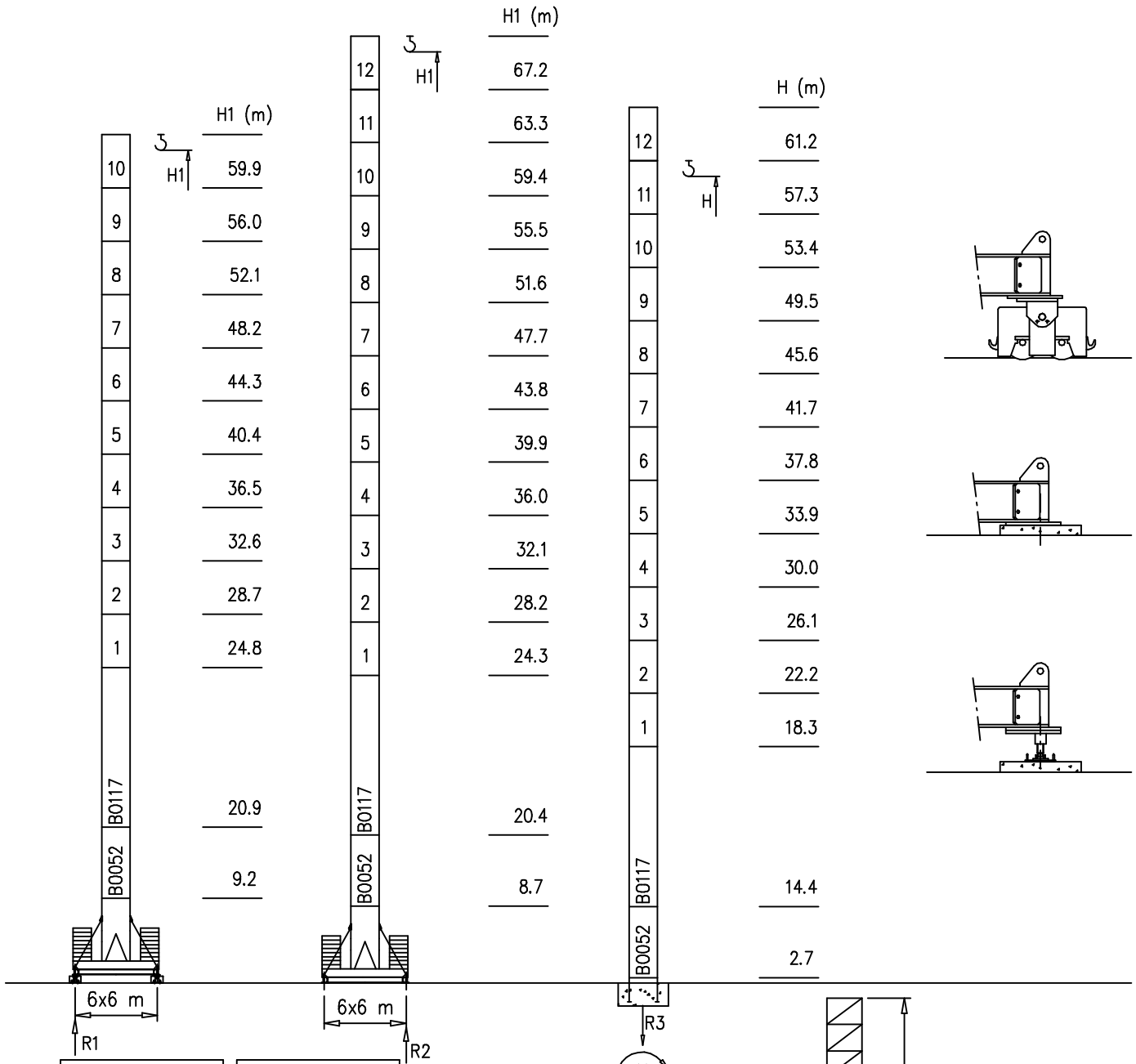
H	n°	Tot.
0–35 m	2C+18D	60800 kg
36–45 m	2C+22D	72000 kg
46–58 m	2C+32D	105000 kg



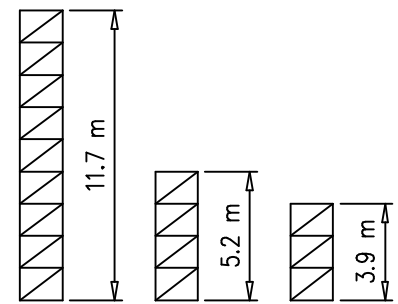
Torre/Reazioni – Masts/Reactions – Mat/Réactions – Maste/Eckdrücke – Mästil/Reacciones – Tramo/Reacções

S2050

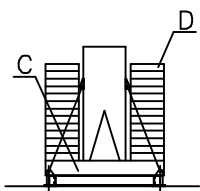
 33 m → 58 m



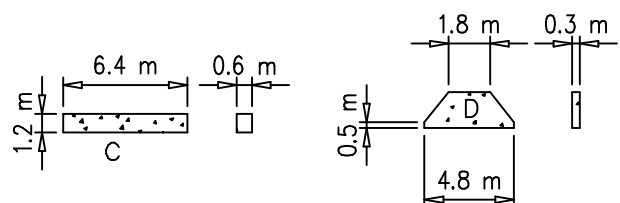
H=46–58 m		H=0–45 m	
R1	90 t	R1	89 t
R2	90 t	R2	88 t
R3	91 t	R3	63 t
M	341 tm	M	185 tm



Peso zavorra – Ballast weight – Poids du lest – Ballastgewicht – Peso de lastre

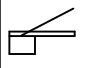
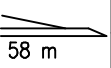
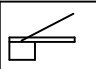
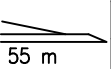
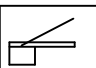
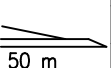
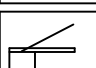
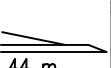


H	n°	Tot.
0–55 m	2C+ 16D	102320 kg
56–67 m	2C+ 18D	112610 kg

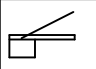

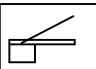
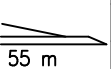
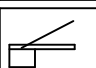
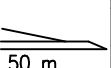
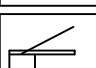
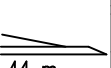


Curve di carico – Courbes de charges – Load diagrams – LastKurven – Curvas de cargas

Pmax 5000 kg

	22000 kg		3.5	19	20	24	28	30	32	34	36	38	40	42	44	46	48	50	52	54	56	58	m
			5000	5000	4630	3780	3180	2940	2720	2540	2370	2220	2090	1970	1860	1760	1670	1580	1500	1430	1360	1300	kg
	22000 kg		3.5	21	24	28	30	32	34	36	38	40	42	44	46	48	50	52	54	55	m		
			5000	5000	4250	3580	3310	3080	2870	2680	2520	2370	2240	2110	2000	1900	1810	1720	1640	1600	kg		
	19560 kg		3.5	24	28	30	32	34	36	38	40	42	44	46	48	50	m						
			5000	5000	4280	3970	3690	3450	3230	3040	2860	2710	2560	2430	2310	2200	kg						
	17115 kg		3.5	23	24	28	30	32	34	36	38	40	42	44	m								
			5000	5000	4960	4190	3880	3610	3370	3160	2970	2800	2640	2500	kg								

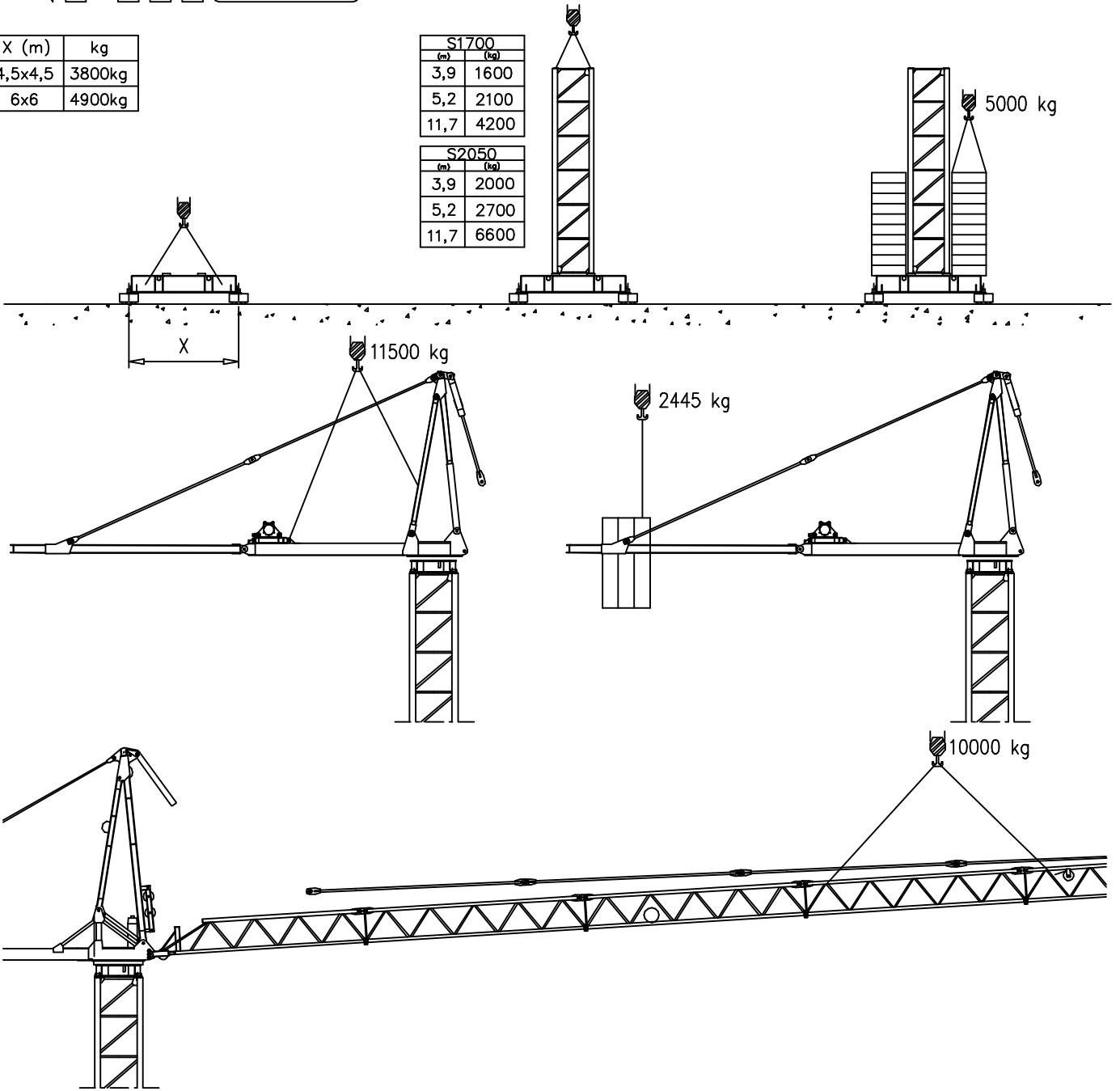
Pmax 10000/5000 kg

	22000 kg		3.5	11	12	16	20	24	28	30	32	34	36	38	40	42	44	46	48	50	52	54	56	58	m
			10000	10000	8300	5900	4630	3780	3180	2940	2720	2540	2370	2220	2090	1970	1860	1760	1670	1580	1500	1430	1360	1300	kg
	22000 kg		3.5	12	16	20	24	28	30	32	34	36	38	40	42	44	46	48	50	52	54	55	m		
			10000	10000	6600	5190	4250	3580	3310	3080	2870	2680	2520	2370	2240	2110	2000	1900	1810	1720	1640	1600	kg		
	19560 kg		3.5	14	16	20	24	28	30	32	34	36	38	40	42	44	46	48	50	m					
			10000	10000	8000	6180	5070	4280	3970	3690	3450	3230	3040	2860	2710	2560	2430	2310	2200	kg					
	17115 kg		3.5	14	16	20	24	28	30	32	34	36	38	40	42	44	m								
			10000	10000	8000	6040	4960	4190	3880	3610	3370	3160	2970	2800	2640	2500	kg								

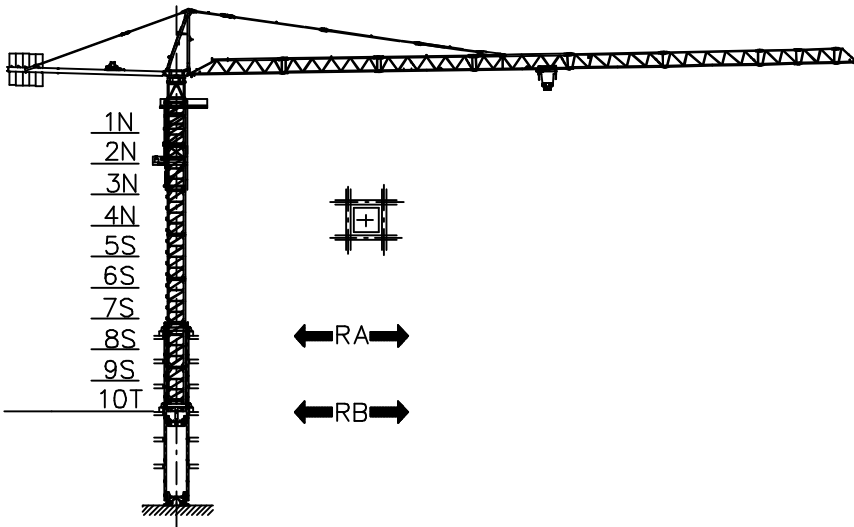
X (m)	kg
4,5x4,5	3800kg
6x6	4900kg

S1700	
(m)	(kg)
3,9	1600
5,2	2100
11,7	4200

S2050	
(m)	(kg)
3,9	2000
5,2	2700
11,7	6600



Gru in cavedio - Climbing crane - Télescope sur dalles - Kletterkrane in Gebäude - Telescopage gruas trepadoras - Telescopagem sobre lages



Number of tower section	H (m.)
5S+2N+T	33.40
5S+3N+T	37.30
5S+4N+T	41.20

N = Standard mast element  
 T = Telescopic element  
 S = Special mast element

Meccanismi – Mechanisms – Mécanismes – Antriebe – Mecanismos

Sollevamento V40.60 Hoisting Levage Heben Elevaciòn Elevaçao	▲ ▼		1a	2 m/min	5000 kg	30 kW	V40.60 48 kVA
			2a	20 m/min	5000 kg		
			3a	31 m/min	4500 kg		
			4a	46 m/min	3000 kg		
			5a	60 m/min	2250 kg		
			1a	1 m/min	10000 kg		
			2a	10 m/min	10000 kg		
			3a	15 m/min	9000 kg		
			4a	23 m/min	6000 kg		
			5a	30 m/min	5000 kg		
Sollevamento V60.100 Hoisting Levage Heben Elevaciòn Elevaçao	▲ ▼		1a	2 m/min	5000 kg	45 kW	V60.100 66 kVA
			2a	40 m/min	5000 kg		
			3a	60 m/min	3500 kg		
			4a	80 m/min	2600 kg		
			5a	100 m/min	2200 kg		
			1a	1 m/min	10000 kg		
			2a	20 m/min	10000 kg		
			3a	30 m/min	7000 kg		
			4a	40 m/min	5200 kg		
			5a	50 m/min	4400 kg		
Carrello Trolleying Distribution Katzfahren Distribuciòn Distribuiçao	◀ ▶		1a	5 m/min	10000 kg	4 kW	Potenza elettrica necessaria Puissance électrique nécessaire Necessary electric power Anschlusswert – Potencia
			2a	25 m/min	10000 kg		
			3a	50 m/min	5000 kg		
Rotazione Slewing Orientation Schwenken Orientaciòn Rotaçao			1a	0 → 0.2	giri/min tr/min rp/min	4.4 kW @ 1200rpm n° 2 x 2.2 kW	
			2a	0 → 0.6			
			3a	0 → 0.9			
Traslazione Travelling Translation Kranfahren Traslaciòn Translaçao	◀ ▶		1a	0 → 5	7.5 kW		
			2a	0 → 20			

Rete elettrica – Réseau – Mains supply – Netzstrom – Red – Rede electrica 400V – 50 Hz

	FEM 1.001 2000/14/CE
--	-------------------------



Documento commerciale non contrattuale  
Per tutte le informazioni tecniche riferirsi  
alle corrispondenti istruzioni

Unverbindliches Vertriebsdokument.  
Für technische Informationen, siehe die  
entsprechenden Anweisungen.

This commercial document is not legally  
binding. For any technical information, please  
refer to the corresponding instructions.

Documento comercial no contractual  
Para cualquier información técnica,  
ver la noticia correspondiente.

Code: 15/CA37K30A1			
Ed.	Data	Rev	Data
1	05.06.03	0	05.06.03