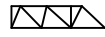
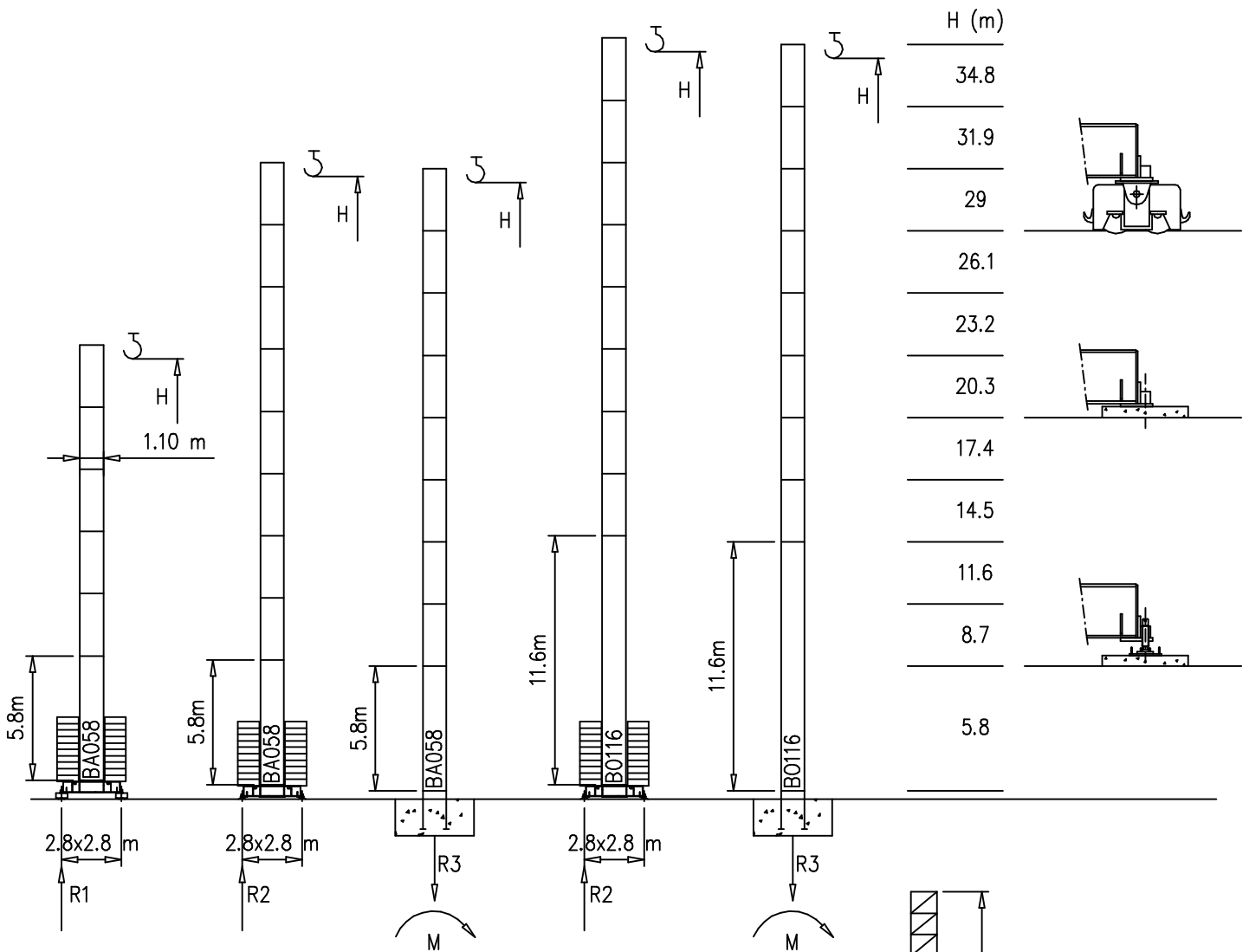


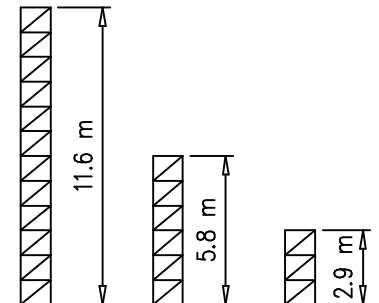
Torre/Reazioni – Masts/Reactions – Mat/Réactions – Maste/Eckdrücke – Mästil/Reacciones – Tramo/Reacções

S1100

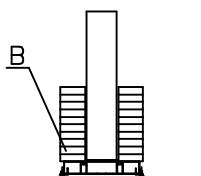
 20 m \longrightarrow 35 m



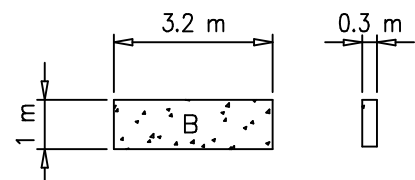
H=29–35 m		H=24–29 m		H=0–23 m	
R1		R1		R1	27 t
R2	30 t	R2	27 t	R2	24.5 t
R3	18 t	R3	17 t	R3	16 t
M	50 tm	M	44 tm	M	39 tm



Peso zavorra – Ballast weight – Poids du lest – Ballastgewicht – Peso de lastre

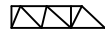


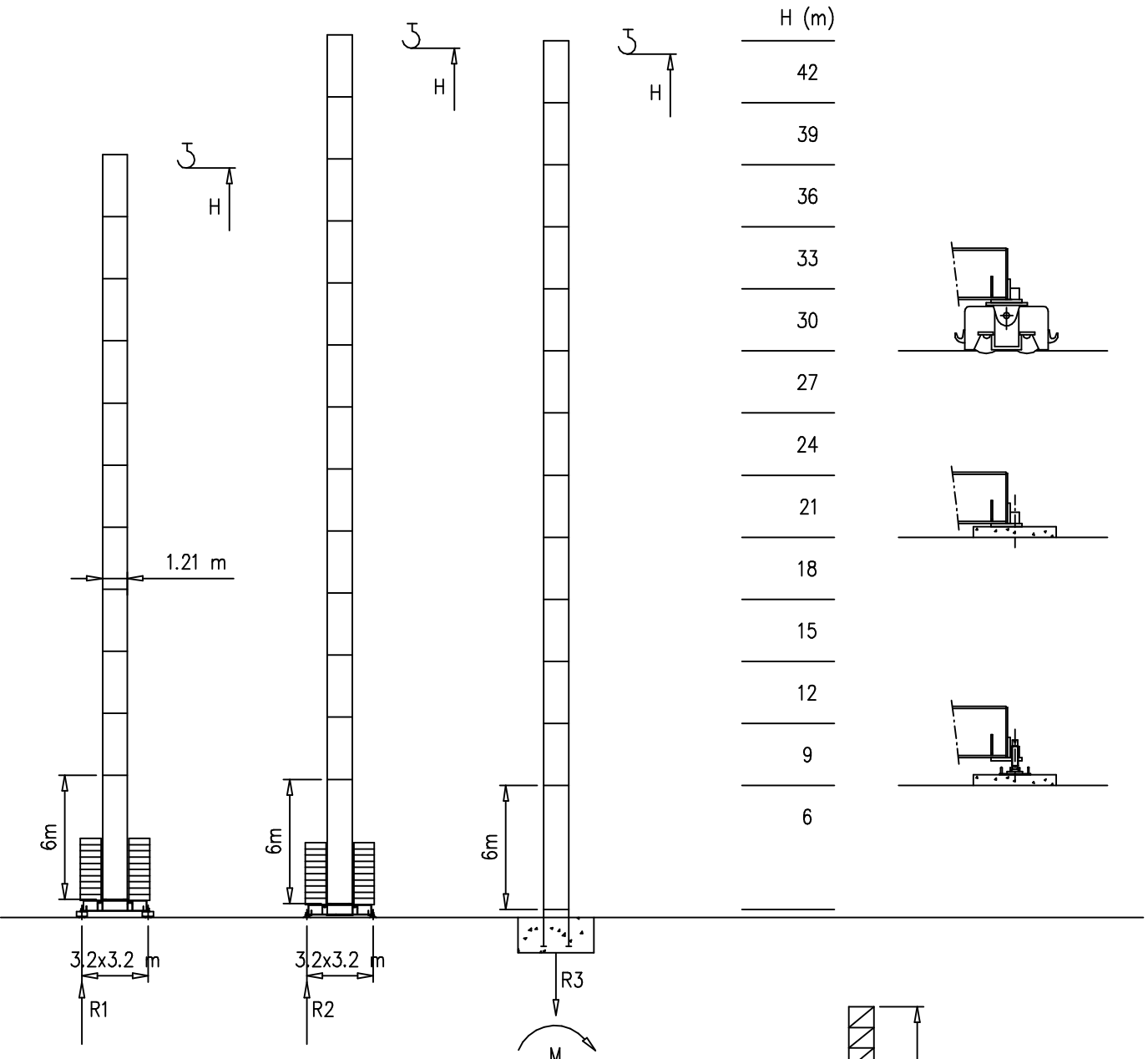
H	n°	Tot.
0–12 m	14 B	30800 kg
13–30 m	18 B	39600 kg
31–35 m	20 B	44000 kg



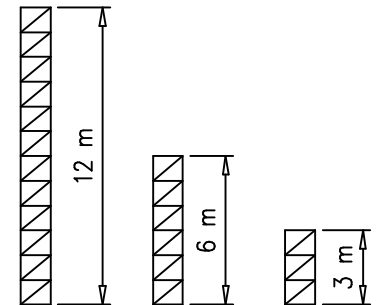
Torre/Reazioni – Masts/Reactions – Mat/Réactions – Maste/Eckdrücke – Mástil/Reacciones – Tramo/Reacções

S1210

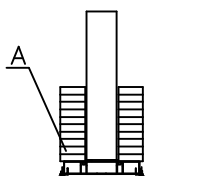
 20 m → 35 m



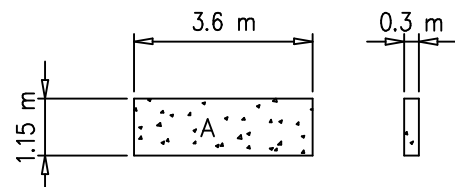
H=24–42 m		H=0–23 m	
R1		R1	25 t
R2	47.5 t	R2	25 t
R3	62 t	R3	16 t
M	106 tm	M	39 tm



Peso zavorra – Ballast weight – Poids du lest – Ballastgewicht – Peso de lastre

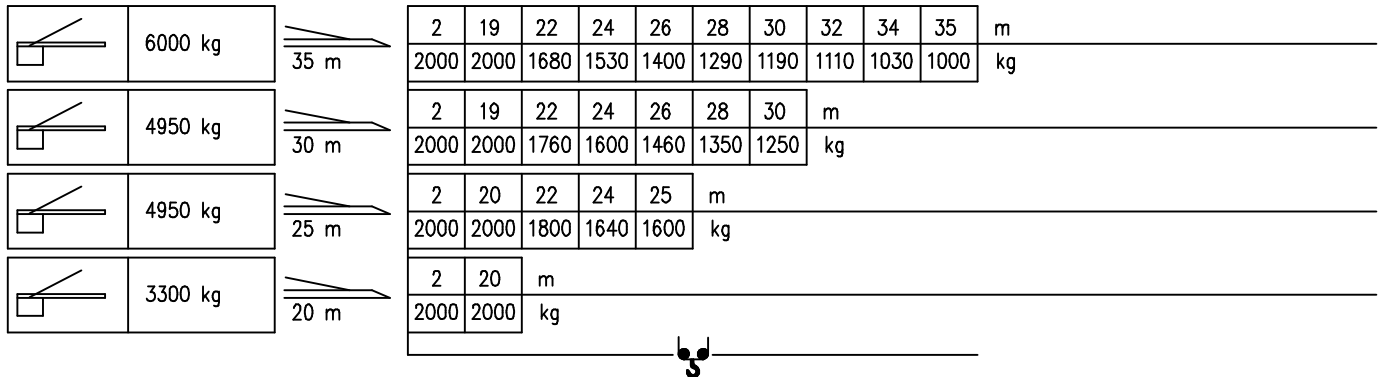


H	n°	Tot.
0–24 m	12 A	36000 kg
25–36 m	16 A	48000 kg
37–42 m	18 A	54000 kg

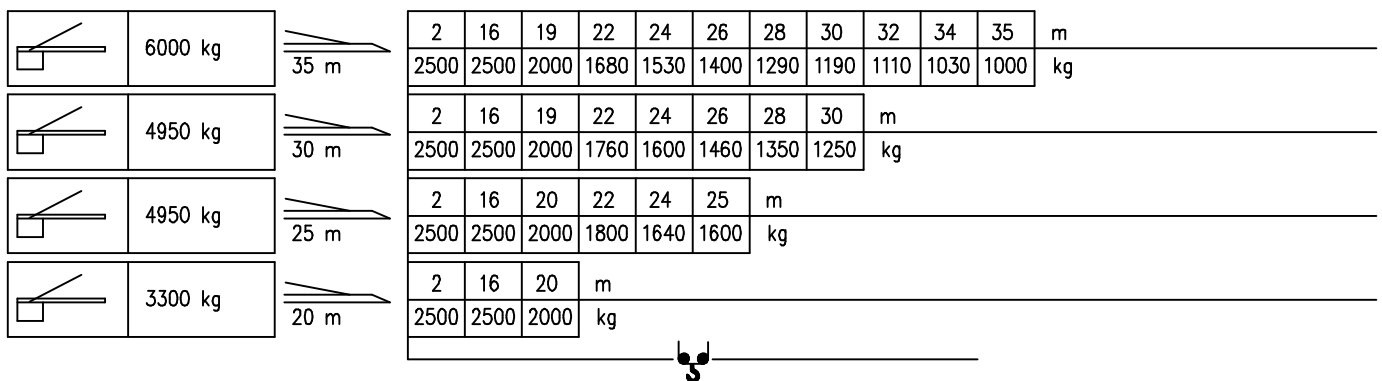


Curve di carico – Courbes de charges – Load diagrams – LastKurven – Curvas de cargas

Pmax 2000 kg



Pmax 2500 kg

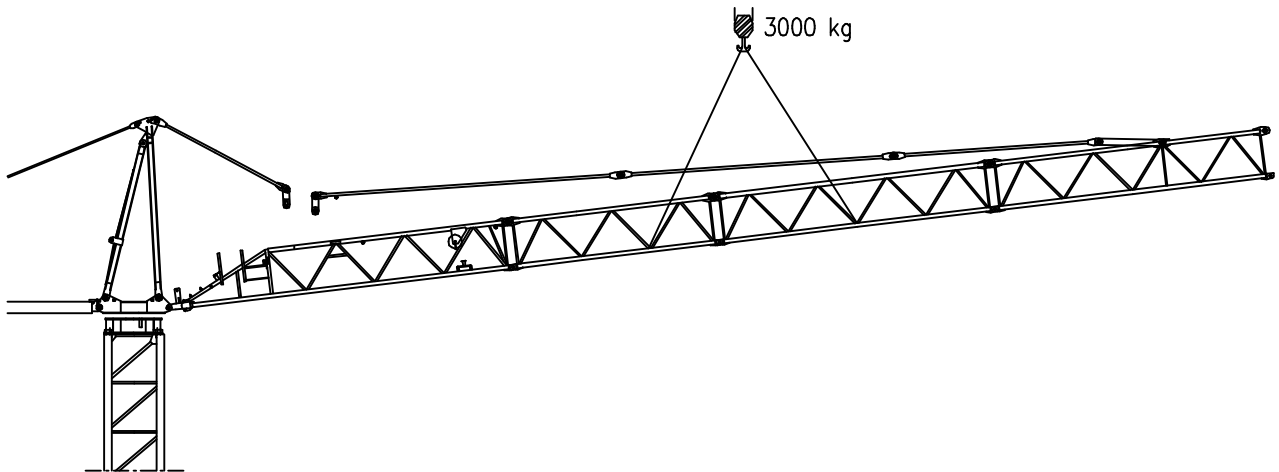
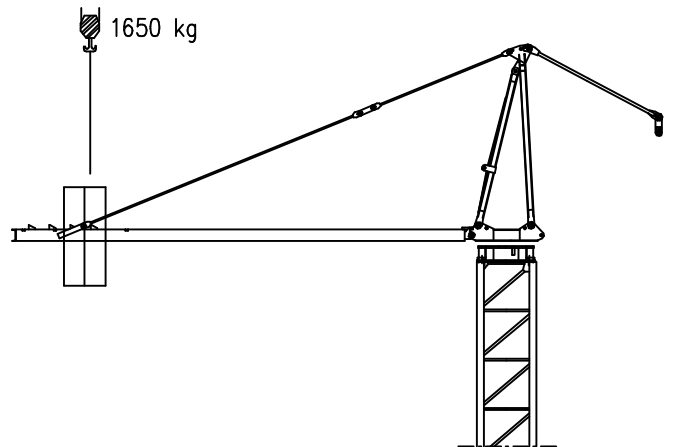
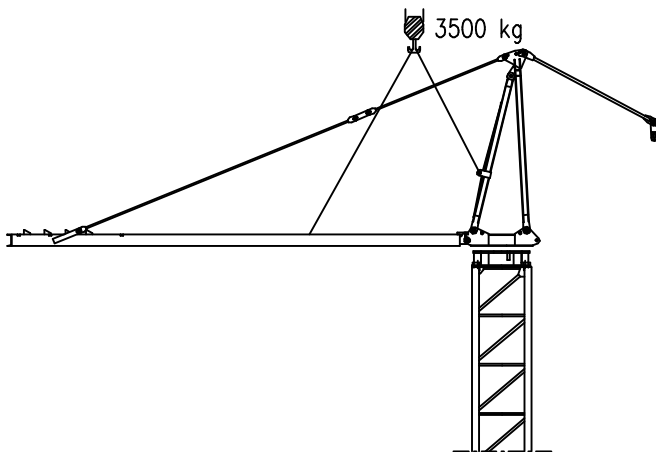
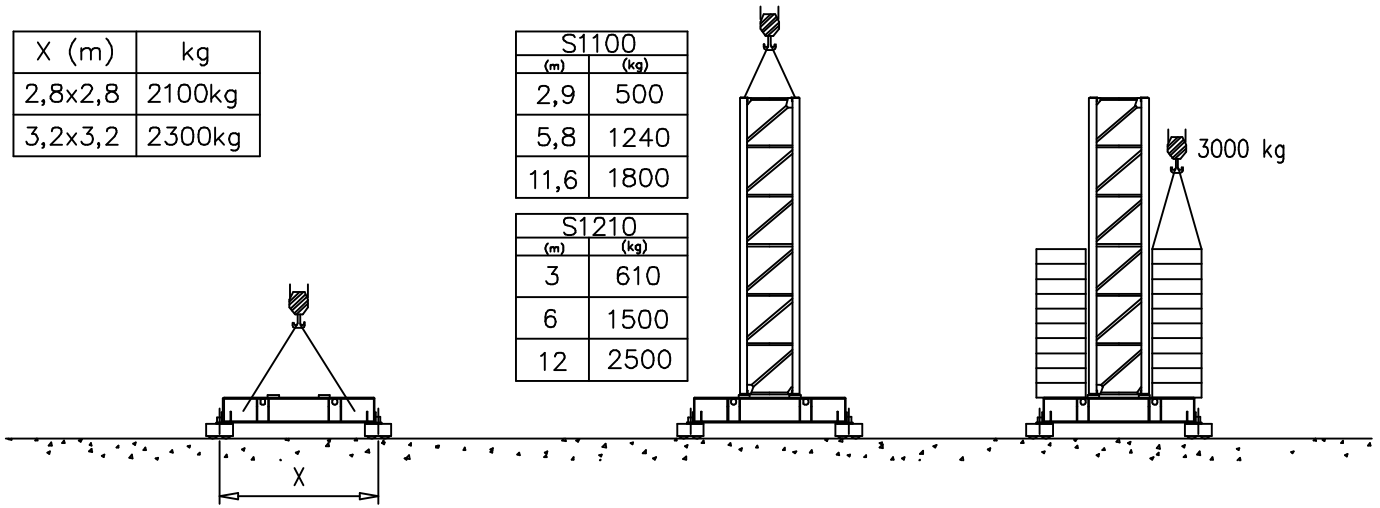


Montaggio – Montage – Erection – Montage – Montaje – Montagem








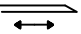



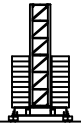
X (m)	kg
2,8x2,8	2100kg
3,2x3,2	2300kg

S1100	
(m)	(kg)
2,9	500
5,8	1240
11,6	1800

S1210	
(m)	(kg)
3	610
6	1500
12	2500



Meccanismi – Mechanisms – Mécanismes – Antriebe – Mecanismos

Sollevamento S9.30 e V10.30 Hoisting Levage Heben Elevaciòn Elevaçao			1a	4 m/min	2000 kg	7 kW	S9.30
			2a	16 m/min	2000 kg		V10.30
			3a	32 m/min	1000 kg		13 kVA
Sollevamento S15.40 e V15.40 Hoisting Levage Heben Elevaciòn Elevaçao			1a	4 m/min	2500 kg	11 kW	S15.40
			2a	20 m/min	2500 kg		21 kVA
			3a	40 m/min	1200 kg		19 kVA
Sollevamento V20.60 Hoisting Levage Heben Elevaciòn Elevaçao			1a	7 m/min	2500 kg	14.7 kW	V20.60 23 kVA
2a			28 m/min	2500 kg			
3a			56 m/min	1200 kg			
Carrello Trolleying Distribution Katzfahren Distribuciòn Distribuiçao			1a	OP 5 m/min	2500 kg	1.5 kW	Potenza elettrica necessaria Puissance électrique nécessaire Necessary electric power Anschlusswert Potencia
			2a	17 m/min	2500 kg		
			3a	34 m/min	1000 kg		
Rotazione Slewing Orientation Schwenken Orientaciòn Rotaçao			1a	0 → 0.2	giri/min tr/min rp/min	2.2 kW @ 1200rpm	
			2a	0 → 0.5			
			3a	0 → 0.8			
Traslazione Travelling Translation Kranfahren Traslaciòn Translaçao			1a	0 → 20		3.7 kW	

Rete elettrica – Réseau – Mains supply – Netzstrom – Red – Rede electrica

400V – 50 Hz

